



**16 Queens Road, Coventry, CV1 3EJ**

**SHELDON  
BOSLEY  
KNIGHT**

LAND AND  
PROPERTY  
PROFESSIONALS

# Property Description

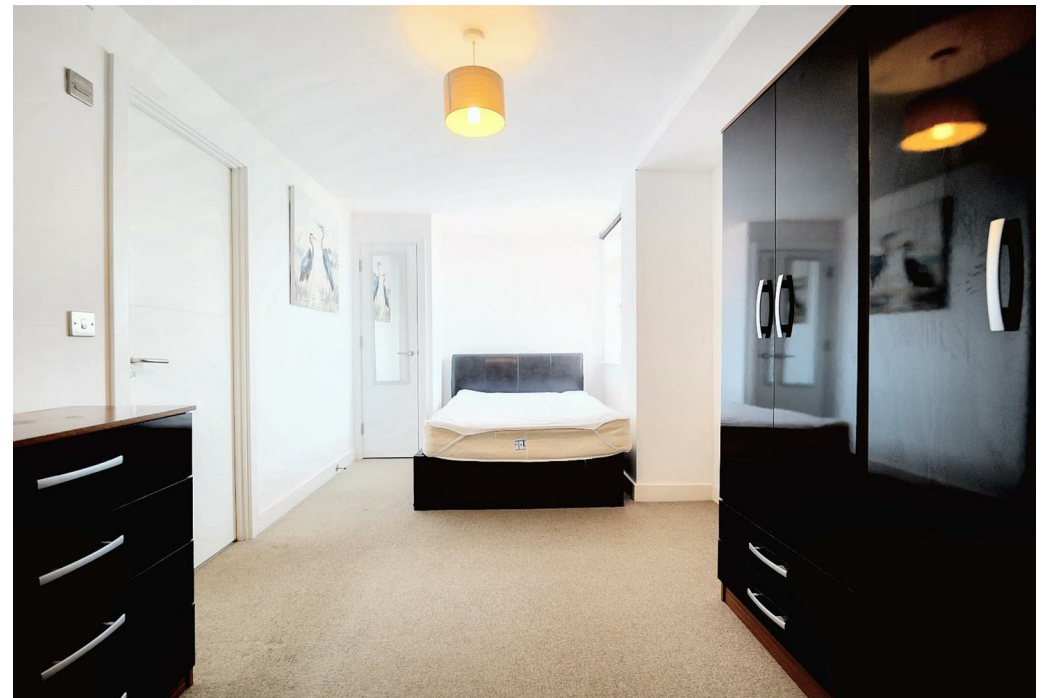
Modern Two-Bedroom City Centre Apartment with En-Suite – Ideal for First-Time Buyers or Investors

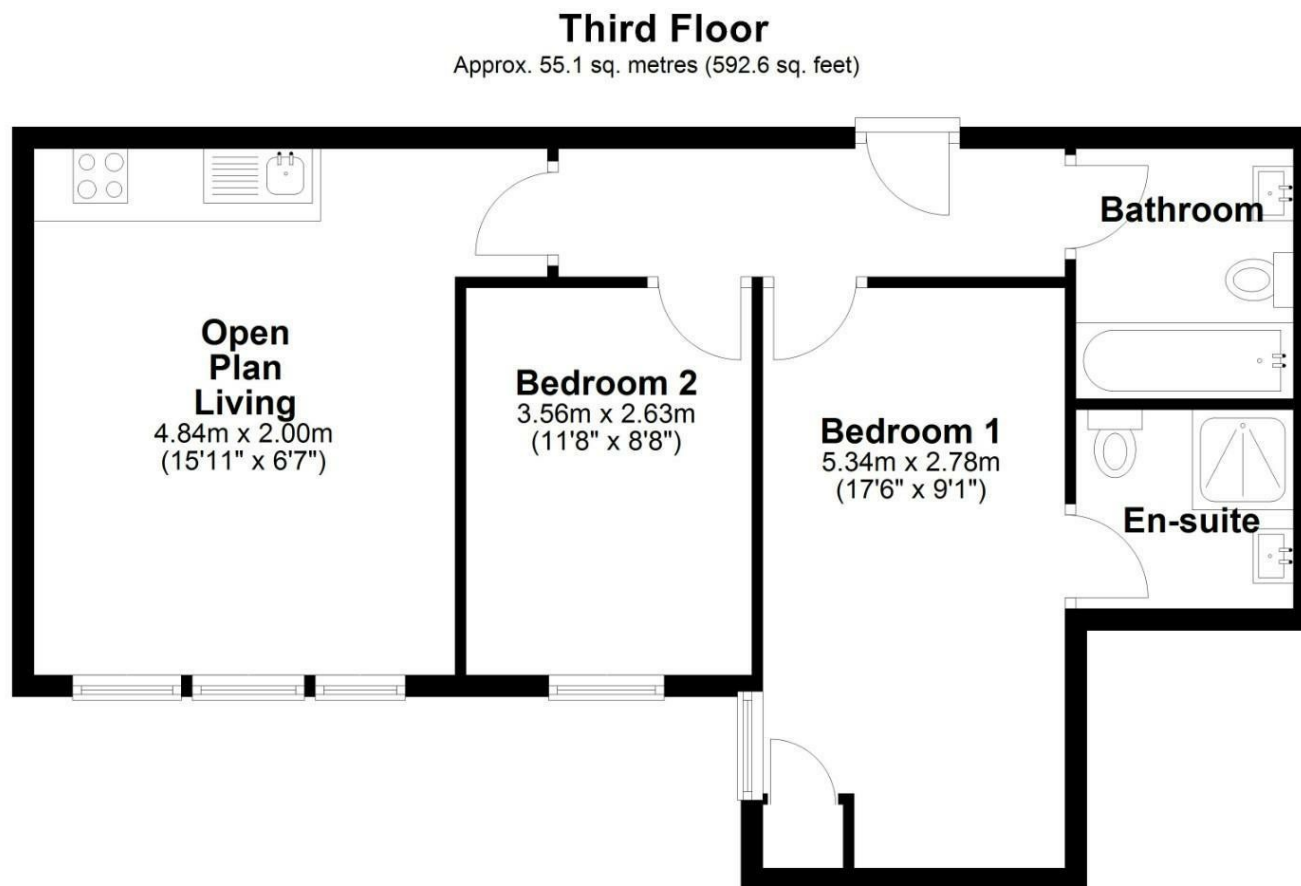
Loveitts are proud to present this beautifully presented two-bedroom apartment situated on the top floor of the sought-after Queens House development on Queens Road, right in the heart of Coventry City Centre. Offering stylish accommodation and excellent convenience, this modern apartment is perfect for professionals, first-time buyers, or buy-to-let investors.

The property features a spacious open-plan living and kitchen area with contemporary fittings and ample natural light. There are two well-proportioned bedrooms, including a master with a private en-suite shower room, and a separate modern family bathroom.

Queens House is a secure and well-maintained building offering lift access to all floors, a communal entrance with intercom system, and is just a short walk from Coventry University, the train station, and an array of shops, restaurants, and amenities.







Total area: approx. 55.1 sq. metres (592.6 sq. feet)

## Key Features

- TWO SPACIOUS BEDROOMS
- CLOSE TO LOCAL AMENITIES
- A SHORT WALK FROM THE CITY CENTRE
- PERFECT FOR FIRST TIME BUYERS
- GREAT INVESTMENT PROPERTY
- VERY WELL PRESENTED
- ELEVATOR ACCESS IN THE COMMUNAL AREA
- EN-SUITE TO MASTER BEDROOM
- CLOSE PROXIMITY TO LOCAL BUS ROUTES AND TRAIN STATION
- EPC - D

**Offers Over  
£170,000**

EPC Rating - D

Tenure - Leasehold

Council Tax Band - B

Local Authority -  
CCC

We routinely refer clients to both our recommended Legal Firm and a panel of Financial Services Providers. It is your decision whether you choose to deal with these companies. In making that decision, you should know that we receive a referral fee